



## Door lock with handle

### Description

Door shield with handle, for enclosure univers IP44

### Cat ref.

**FZ598N**

FZ598N



UN31TN

## Kits for perforated mounting plates

### Description

Kit, univers FW, media with perforated mounting plate, 450x250mm

### Cat ref.

**UN31TN**

Kit, univers FW, media with perforated mounting plate, 450x500mm

**UN32TN**

Kit, univers FW, media with perforated mounting plate, 600x250mm

**UN41TN**

Kit, univers FW, media with perforated mounting plate, 600x500mm

**UN42TN**

Kit, univers FW, media with perforated mounting plate, 750x250mm

**UN51TN**

Kit, univers FW, media with perforated mounting plate, 750x500mm

**UN52TN**

Kit, univers FW, media with perforated mounting plate, 900x250mm

**UN61TN**

Kit, univers FW, media with perforated mounting plate, 900x500mm

**UN62TN**

Kit, univers FW, media with perforated mounting plate, 1050x250mm

**UN71TN**

Kit, univers FW, media with perforated mounting plate, 1050x500mm

**UN72TN**



UZ01A2

## Uprights and Upright Holders

### Description

Tower upper part, universZ, low level

### Cat ref.

**UZ01A2**

Tower underpart, universZ, with bar

**UZ03A1**

Vertical uprights, univers FW, height 450mm, 2 pieces

**UN03FN**

Vertical uprights, univers FW, height 600mm, 2 pieces

**UN04FN**

Vertical uprights, univers FW, height 750mm, 2 pieces

**UN05FN**

Vertical uprights, univers FW, height 900mm, 2 pieces

**UN06FN**

Vertical uprights, univers FW, height 1050mm, 2 pieces

**UN07FN**



UZ04A1

## Association kit for frame

### Description

Double tower, universZ, low level, with screws

### Cat ref.

**UZ04A1**



KM22A

## PE + N connections

### Description

PE/N Terminal, univers Z, 2x22 clamping points, 10x16/12x10 mm<sup>2</sup>

### Cat ref.

**KM22A**

PE/N Terminal, universZ, 2x13 clamping points, 6x16/7x10 mm<sup>2</sup>

**KM13A**

PE/N Terminal, univers Z, 2x25 clamping points, 11x16/14x10 mm<sup>2</sup>

**KM25A**

PE/N Terminal, universZ, 4x5 clamping points, 2x6/2x10/1x25mm<sup>2</sup>, with clamp for 25mm<sup>2</sup>

**KM05B**



### QuickConnect N terminals

Description	Cat ref.
Terminal, QuickConnect, neutral, 10 connections	<b>KN10N</b>
Terminal, QuickConnect, neutral, 14 connections	<b>KN14N</b>
Terminal, QuickConnect, neutral, 18 connections	<b>KN18N</b>
Terminal, QuickConnect, neutral, 22 connections	<b>KN22N</b>
Terminal, QuickConnect, neutral, 26 connections	<b>KN26N</b>

KN10N



### QuickConnect Earth terminals

Description	Cat ref.
Terminal, QuickConnect, earth, 14 connections	<b>KN14E</b>
Terminal, QuickConnect, earth, 18 connections	<b>KN18E</b>
Terminal, QuickConnect, earth, 22 connections	<b>KN22E</b>

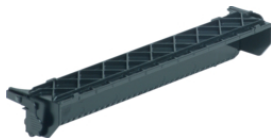
KN14E



### Bridging combs for quickconnect terminals

Description	Cat ref.
Terminal, QC, earth, jumper, 1 Set=10piece	<b>KN99E</b>
Terminal, QC, neutral, jumper, 1 Set=10piece	<b>KN99N</b>

KN99E



### Terminal support

Description	Cat ref.
Connection support, univers, for DIN rail mounting of QuickConnect modules	<b>UZ00K1</b>

UZ00K1



### Universal adapter

Description	Cat ref.
Terminal carrier, QC, universal adapter	<b>KN00A</b>

KN00A



UN06GN

## Supporting structures

Description	Cat ref.
Equipment unit for FW flush encl. with 6 DIN rails, without cover, 900x250mm	<b>UN06GN</b>
Equipment unit for FW flush encl. with 7 DIN rails, without cover, 1050x250mm	<b>UN07GN</b>
Equipment unit for FW flush encl. with 3 DIN rails, without cover, 450x250mm	<b>UN03GN</b>
Equipment unit for FW flush encl. with 4 DIN rails, without cover, 600x250mm	<b>UN04GN</b>
Equipment unit for FW flush encl. with 5 DIN rails, without cover, 750x250mm	<b>UN05GN</b>



US11A1

## Closed protective covers

Description	Cat ref.
Cover plate, universN, 150x250mm, plain	<b>US11A1</b>
Cover plate, universN, 300x250mm, plain	<b>US21A1</b>
Cover plate, universN, 450x250mm, plain	<b>US31A1</b>
Cover plate, universN, 600x250mm, plain	<b>US41A1</b>
Cover plate, universN, 750x250mm, plain	<b>US51A1</b>



US31A3

## Opened protective covers

Description	Cat ref.
Cover plate, universN, 450x250mm, 3x12M, slot distance 125mm	<b>US31A3</b>
Cover plate, universN, 600x250mm, 4x12M, slot distance 125mm	<b>US41A5</b>
Cover plate, universN, 250x750mm, 5x12 Modules, slit gap 125mm	<b>US51A5</b>



UT44AN

## Verticle partitions

Description	Cat ref.
Partition plate vertical, univers FW, height 450mm	<b>UT44AN</b>
Partition plate vertical, univers FW, height 600mm	<b>UT44BN</b>
Partition plate vertical, univers FW, height 750mm	<b>UT44CN</b>
Partition plate vertical, univers FW, height 900mm	<b>UT44DN</b>
Partition plate vertical, univers FW, height 1050mm	<b>UT44FN</b>