



External handles, 3 positions: 0-I-II, lockable with 3 padlocks, for HIM 20 to 80A

Description
Grey handle COS 20-80A

Cat ref.
HZC016

HZC016



External handles, 3 positions: 0-I-II, lockable with 3 padlocks, for HI 100 to 125A

Description
Black handle FCS- LBS 63-125A 3pos.

Cat ref.
HZI004

HZI004



Shaft extensions for HIM 20 to 80A, 150mm

Description
Shaft extension N°5 150mm LBS 20-125A

Cat ref.
HZC111

HZC111



Shaft extensions for HIM 20 to 80A, 200mm

Description
Shaft extension N°5 200mm LBS 20-125A

Cat ref.
HZC112

HZC112



Shaft extensions for HIM 20 to 80A, 300mm

Description
Shaft extension N°5 320mm LBS 20-125A

Cat ref.
HZC113

HZC113



Shaft extensions for HI 100 to 125A, 200mm

Description

Shaft extension 200 mm FCS-LBS 80-250A

Cat ref.

HZC103

HZC103



Shaft extensions for HI 100 to 125A, 300mm

Description

Shaft extension 320 mm FCS-LBS 80-250A

Cat ref.

HZC104

HZC104



Terminal shrouds top and bottom (2 pieces), for HIM 20 to 40A

Description

Terminal shrouds 3P LBS 20-63A

Terminal shrouds 4P LBS 20-63A

Cat ref.

HZC211

HZC212

HZC211



Terminal shrouds top and bottom (2 pieces), for HIM 63 to 80A

Description

Terminal shrouds 4P LBS 63-100A

Cat ref.

HZC214

HZC214



Terminal shrouds top and bottom (2 pieces), for HIM 63 to 80A

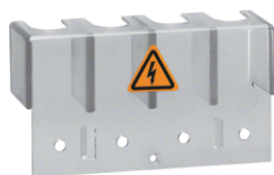
Description

Terminal shrouds 4P LBS 63-100A

Cat ref.

HZC214

HZC214



Terminal shrouds top and bottom (2 pieces), for HI 100 to 125A

Description
Terminal covers ha407

Cat ref.
HZ062

HZ062

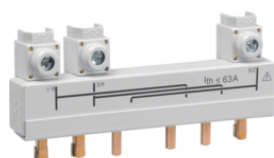


Auxiliaries contacts (mod. width 0.5) for HIM 20 to 80A, 1NO + 1NC

Description
Auxiliary contact 2C LBS 20-160A

Cat ref.
HZC312

HZC312

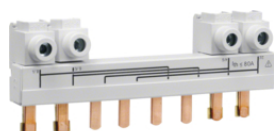


Insulated busbars for HIM 20 to 40A

Description
Insulated busbar 3P change over 20-40A HIM302 HIM304

Cat ref.
HZC706

HZC706

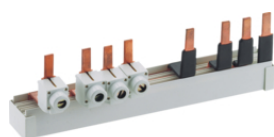


Insulated busbars for HIM 63 to 80A

Description
Insulated busbar 4P change over 63-80A HIM406 HIM408

Cat ref.
HZC709

HZC709



Insulated busbars for HI 100 to 125A

Description
Insulated busbar HI63/125

Cat ref.
HZ156R

HZ156R



Connection terminals for HI 100 to 125A

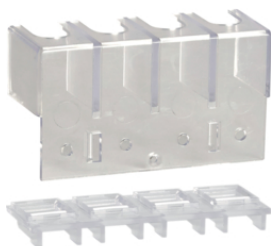
Description

Connection terminal ha406N / ha407

Cat ref.

HZ082

HZ082



Terminal covers and connection terminals for HI 100 to 125A

Description

Terminal covers + Connection terminal ha407

Cat ref.

HZ092

HZ092