



KXA02LH

Phase Feed Through Terminals

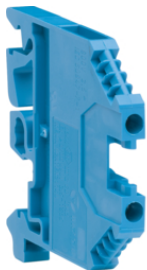
Description	Cat ref.
Feed-through terminal -phase , 2,5mm ² , 800V-24A, screw connection	KXA02LH
Feed-through terminal-phase , 4mm ² , 800V/32A, screw connection	KXA04LH
Feed-through terminal-phase , 6mm ² , 1000V/41A, screw connection	KXA06LH
Feed-through terminal -phase , 10mm ² , 400V/57A, screw connection	KXA10L
Feed-through terminal-phase, 16mm ² , 400V/76A, screw connection	KXA16L
Feed-through terminal-phase, 35mm ² , 400V/125A, screw connection	KXA35L
Feed-through terminal-phase, 150mm ² , 1000V/309A, screw connection	KXB150LH



KXA02LX

Phase Terminal Blocks

Description	Cat ref.
Multi tier terminal -phase , 2,5mm ² , 500V - 24A , screw connection	KXA02LX
Multi tier terminal-phase , 4mm ² , 400V/32A , screw connection	KXA04LX
Earth terminal , multi tier, 4mm ² , screw connection	KXB04EX



KXA02NH

Neutral Terminals

Description	Cat ref.
Feed-through terminal-neutral , 2,5mm ² , 800V-24A, screw connection	KXA02NH
Feed-through terminal-neutral, 4mm ² , 800V/32A	KXA04NH
Feed-through terminal-neutral ,6mm ² , 1000V/41A, screw connection	KXA06NH
Feed-through terminal -neutral, 10mm ² , 400V/57A, screw connection	KXA10N
Feed-through terminal-neutral, 16mm ² , 400V/76A, screw connection	KXA16N
Feed-through terminal-neutral, 35mm ² , 400V/125A, screw connection	KXA35N
Feed-through terminal-neutral, 70mm ² , 1000V/192A, screw connection	KXB70NH
Feed-through terminal-neutral, 150mm ² , 1000V-309A, screw connection	KXB150NH



KXA02E

Earth Terminals

Description	Cat ref.
earth terminal, 2,5mm ²	KXA02E
Earth terminal, 4mm ² , screw connection	KXB04E
Earth terminal, 6mm ² , screw connection	KXB06E
Earth terminal 10mm ² , screw connection	KXA10E
Earth terminal, 16mm ² , screw connection	KXA16E
Earth terminal, 35mm ² , screw connection	KXB35E



KXB04F5

Fuse Terminals

Description	Cat ref.
G-Fuse terminal(5x20), 4mm ² , screw connection	KXB04F5